

SEMI-DETACHED HOUSE SOSPEL GARDEN



89 m² — 3 rooms — 2 bedrooms — Garden level floor

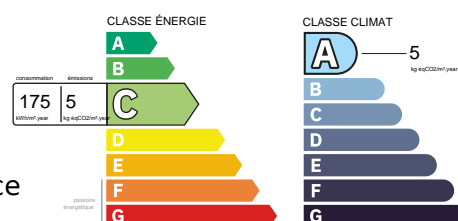
Reference : L16971

Semi-detached house for sale in a quiet subdivision on the banks of the Bévéra with garden garage. This property is located in a free subdivision union association with annual running costs of 550 euros. This small villa of 89,31 m² to refresh consists of an entrance, kitchen, living room, two bedrooms, bathroom with shower, separate toilet, a large room serving as a storage room, a beautiful garden surrounds this house with a garage. This house is located in the town of SOSPEL not far from the city center. ideal for a family for a purchase in principal residence.

349,800 €

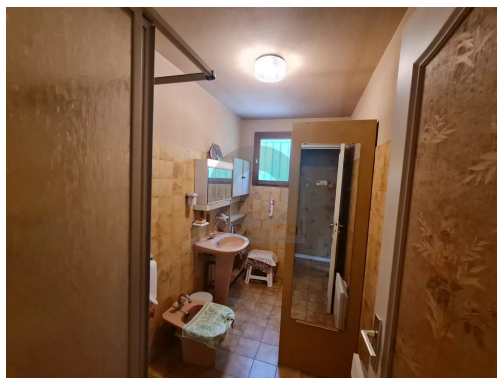


Dynamic Immo
201, Avenue Aristide Briand
06190 Roquebrune-Cap-Martin - France
Phone : +33 4 93 97 87 70



Not contractual information

SEMI-DETACHED HOUSE SOSPEL GARDEN



Dynamic Immo
201, Avenue Aristide Briand
06190 Roquebrune-Cap-Martin - France
Phone : +33 4 93 97 87 70

Not contractual information